

See what's new in dry eye.

Natural-blink design.



Patented smart-system.



Ultra-precise gland clearance.



Let's talk about it.

Not sure where to begin? These questions will help guide the conversation with your doctor so you can get the most out of your appointment.

- Are there any tests to confirm I have dry eye disease?
- How long is the procedure?
- What should I expect right after the procedure?
- Do I need to do anything at home after I've had the gland clearance procedure?



TearCare® is a tool used to deliver heat to your eyelids when your doctor would normally recommend warm compresses for conditions such as Meibomian Gland Dysfunction (MGD), Dry eye or Blepharitis.

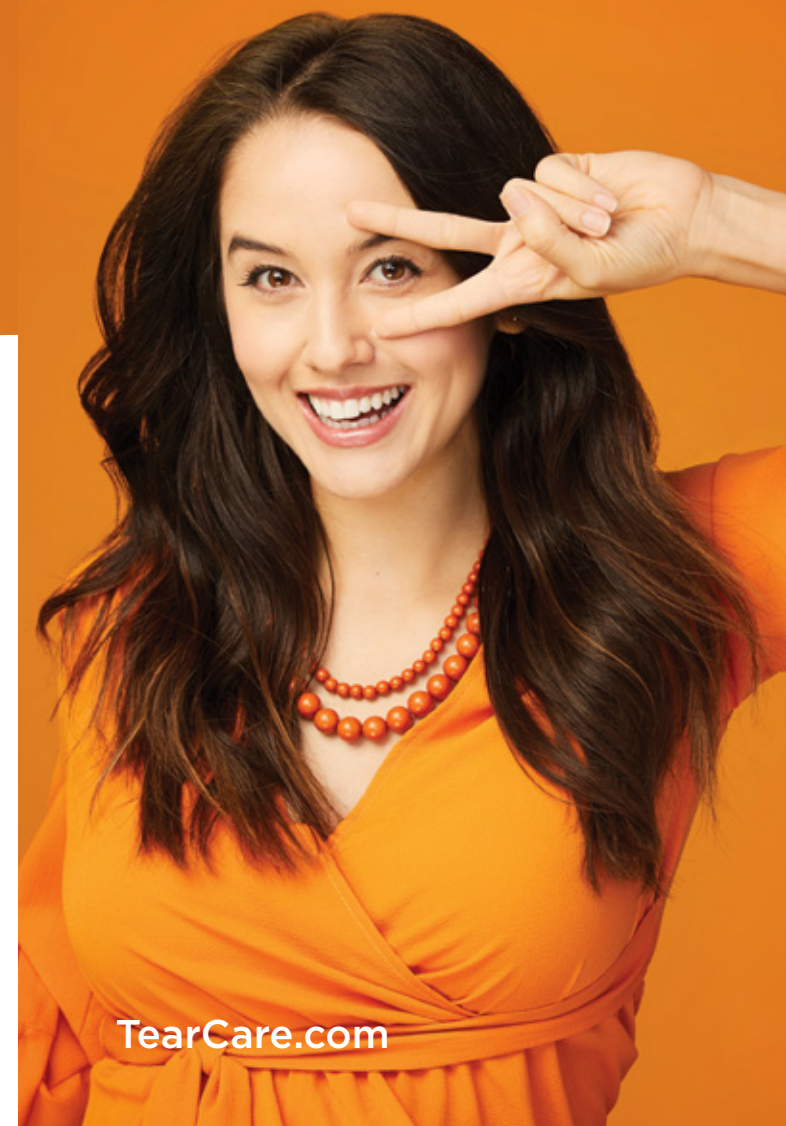


877.266.1144  
info@sightosciences.com  
3000 Sand Hill Road  
Building 3, Suite 105  
Menlo Park, CA 94025

©2019 Sight Sciences. All rights reserved. 06393.A

This is what freedom looks like.

See what's new in dry eye.



[TearCare.com](https://www.tearcare.com)

## A closer look at dry eye.










Dry eye disease is more common than you think. More than 100 million people worldwide suffer from the scratchy, gritty feeling associated with the disease.

The most common form of dry eye is when your tears evaporate too quickly. This can happen when the glands in your eyelids are not producing enough oil ("meibum"). The oil on the tears prevent the tear from evaporating too quickly.



## First things first.

Circle the symptoms you're experiencing and share them with your eye doctor.

 Dry	 Gritty
 Blurry	 Itchy
 Red & Irritated	 Stinging
 Burning	 Teary & Watery
 Light Sensitivity	

Chat with your eye doctor about the symptoms that bother you most.

## What is TearCare, anyway?

TearCare is an open-eye procedure designed to target the underlying cause of evaporative dry eye. By applying heat directly to the eyelid, TearCare melts the blockage within your Meibomian glands. Your doctor then gently presses the eyelid to clear melted meibum.

TearCare is personalized to the unique shape of your eyes. Patients have reported that the warmth during the procedure is comfortable.

